

**Los Angeles Area Chamber of Commerce
Land Use, Construction, and Housing Council**

***“Continuing the Discussion and Partnership to
Improve Los Angeles’ Development Services”***

September 25, 2013

Kevin J. Keller, AICP

Director of Planning and Housing Policy

Office of Mayor Eric Garcetti



**Eric
Garcetti**
#lamayor

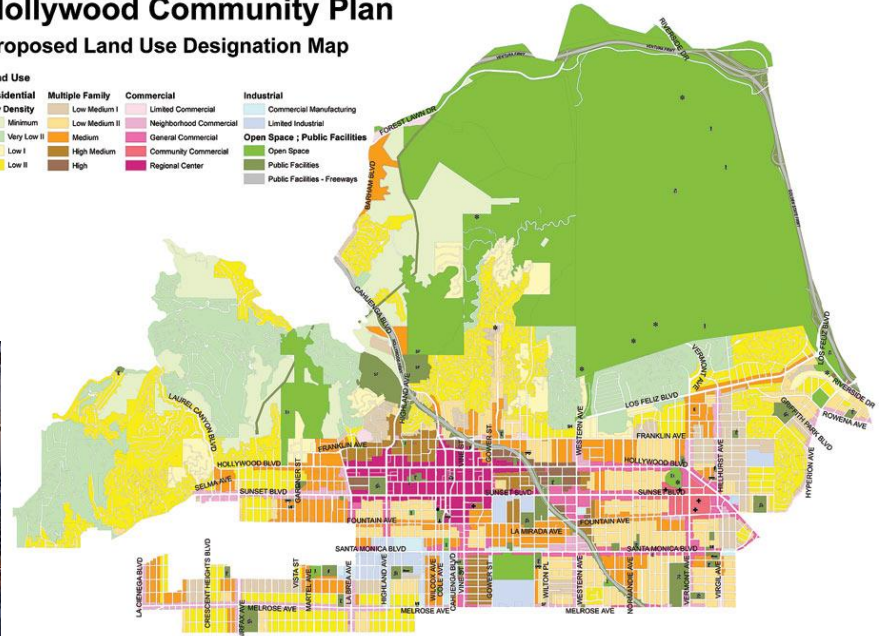


Los Angeles Department of City Planning

Hollywood Community Plan Proposed Land Use Designation Map

Land Use

Residential	Multiple Family	Commercial	Industrial
Low Density	Low Medium I	Limited Commercial	Commercial Manufacturing
Minimum	Low Medium II	Neighborhood Commercial	Limited Industrial
Very Low I	Medium	General Commercial	Open Space ; Public Facilities
Low I	High Medium	Community Commercial	Open Space
Low II	High	Regional Center	Public Facilities
			Public Facilities - Freeways



Structure of Mayor's Office

- City Services
- Budget and Innovation
- Homeland Security and Public Safety
- Economic Development
 - International Trade
 - Business Team
 - Planning and Housing Policy
 - Education and Workforce DEvelopment

Land Use Strategy

- Raising Development Expectations
- Appreciating Economic Investment
- Building and World Class City
- Developing City Leadership
- Investing in the Plan
- Increasing Transparency, Responsiveness, and Accountability

Major Initiatives in the Pipeline

- ReCodeLA
- Central City Community Plans
- BuildLA
- “Realignment”
- Economic Development Non-Profit
- Great Streets
- Entertainment, Hotels, Tourism
- TOD Program

Other Initiatives

- CEQA Reform
- Performance Budgeting and “Public Dashboard”
- Hospitality Permit Expediting
- Streamlining Plan Check Reviews
- “Community Plan Implementation Overlay”

“Please stay involved and let’s collaborate”

Thank you!

Kevin Keller, AICP

Kevin.keller@lacity.org

213-978-0785

City Hall, 13th Floor
