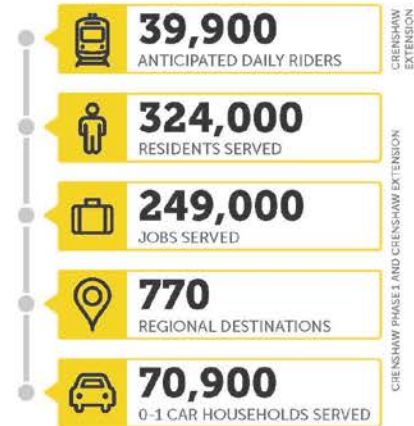


LET'S FINISH THE LINE!

Help us connect the Metro Crenshaw Line to the Red Line in Hollywood

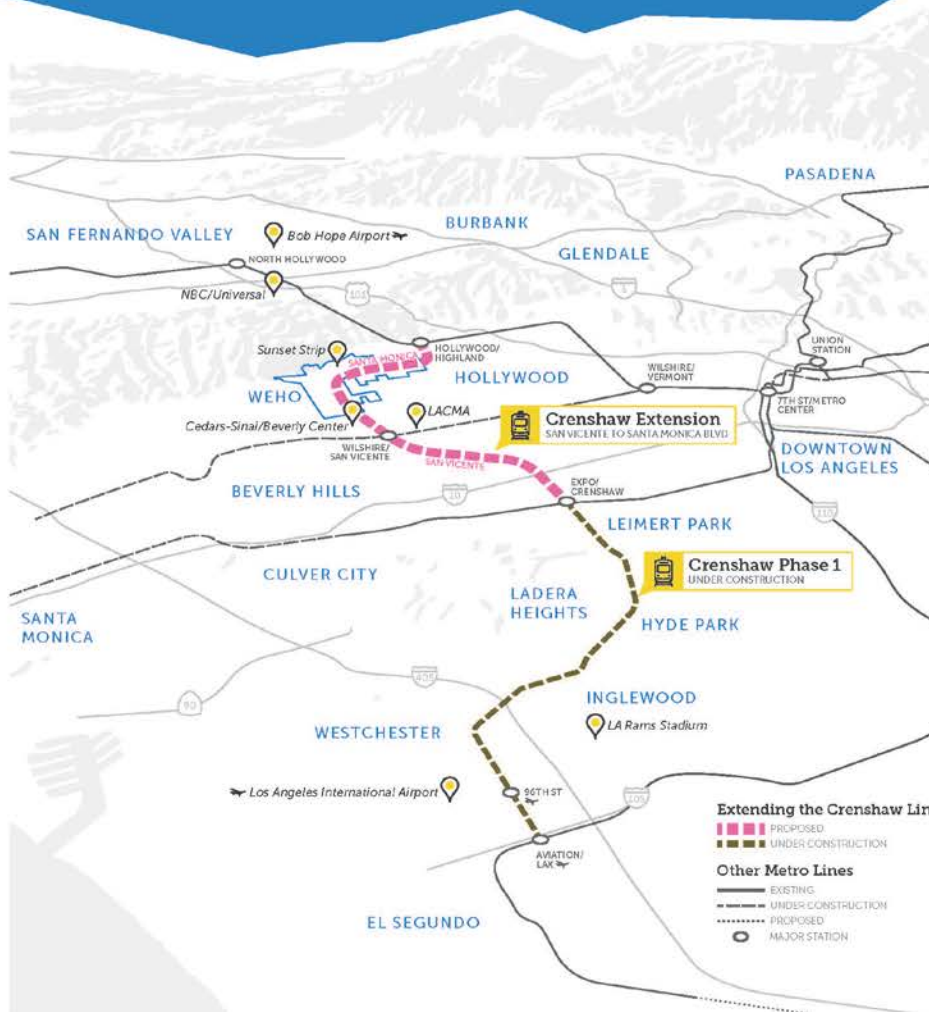
Choosing the San Vicente-to-Santa Monica Blvd route for the northern extension brings rail closer to more people & places



And all sorts of jobs



For more information, or to show your support, go to www.allonboardcoalition.com



The Crenshaw/LAX Northern Extension would connect the San Fernando Valley, WeHo, Inglewood & the South Bay

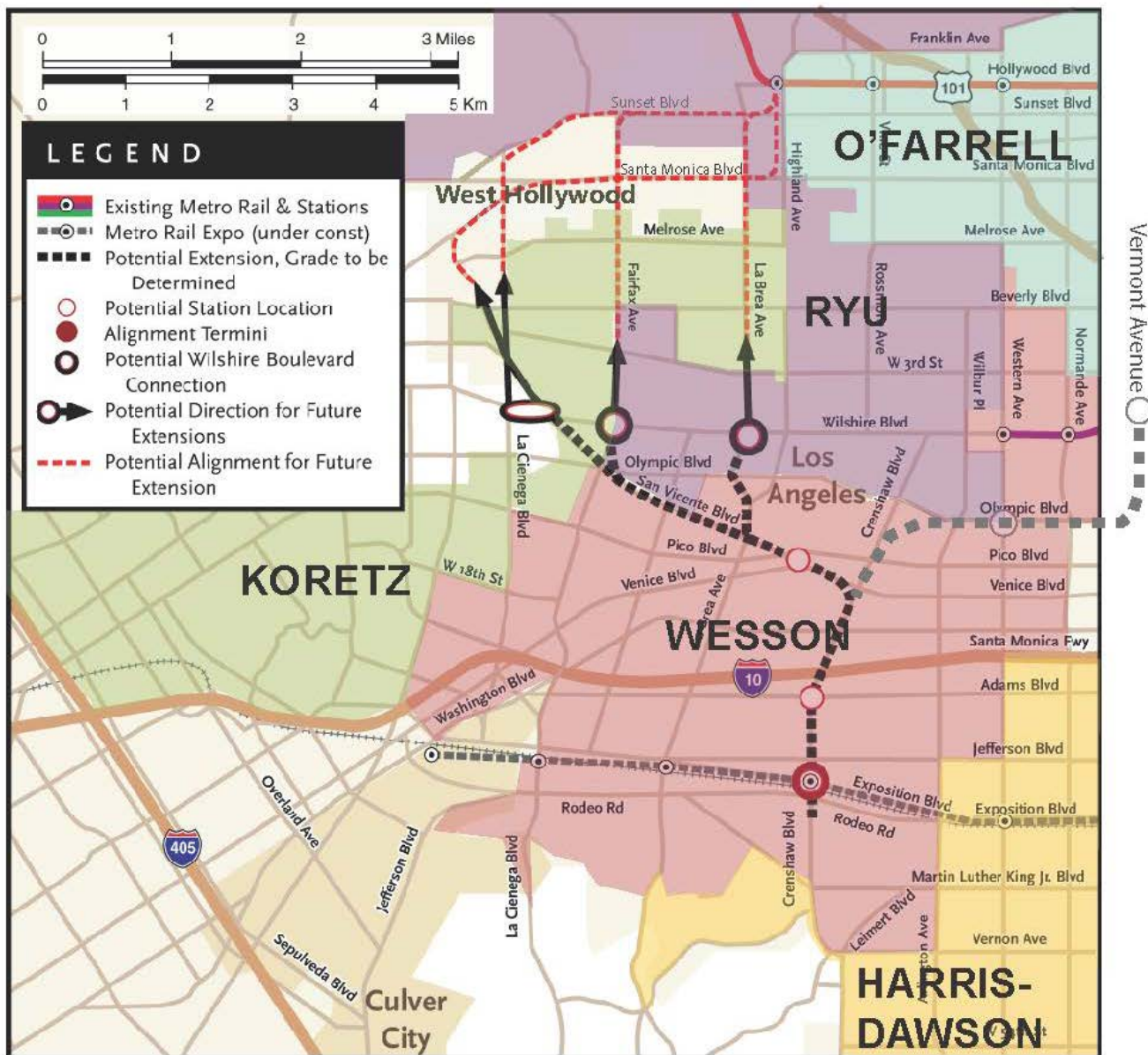


Let's Finish the Line

To connect the South Bay to the San Fernando Valley



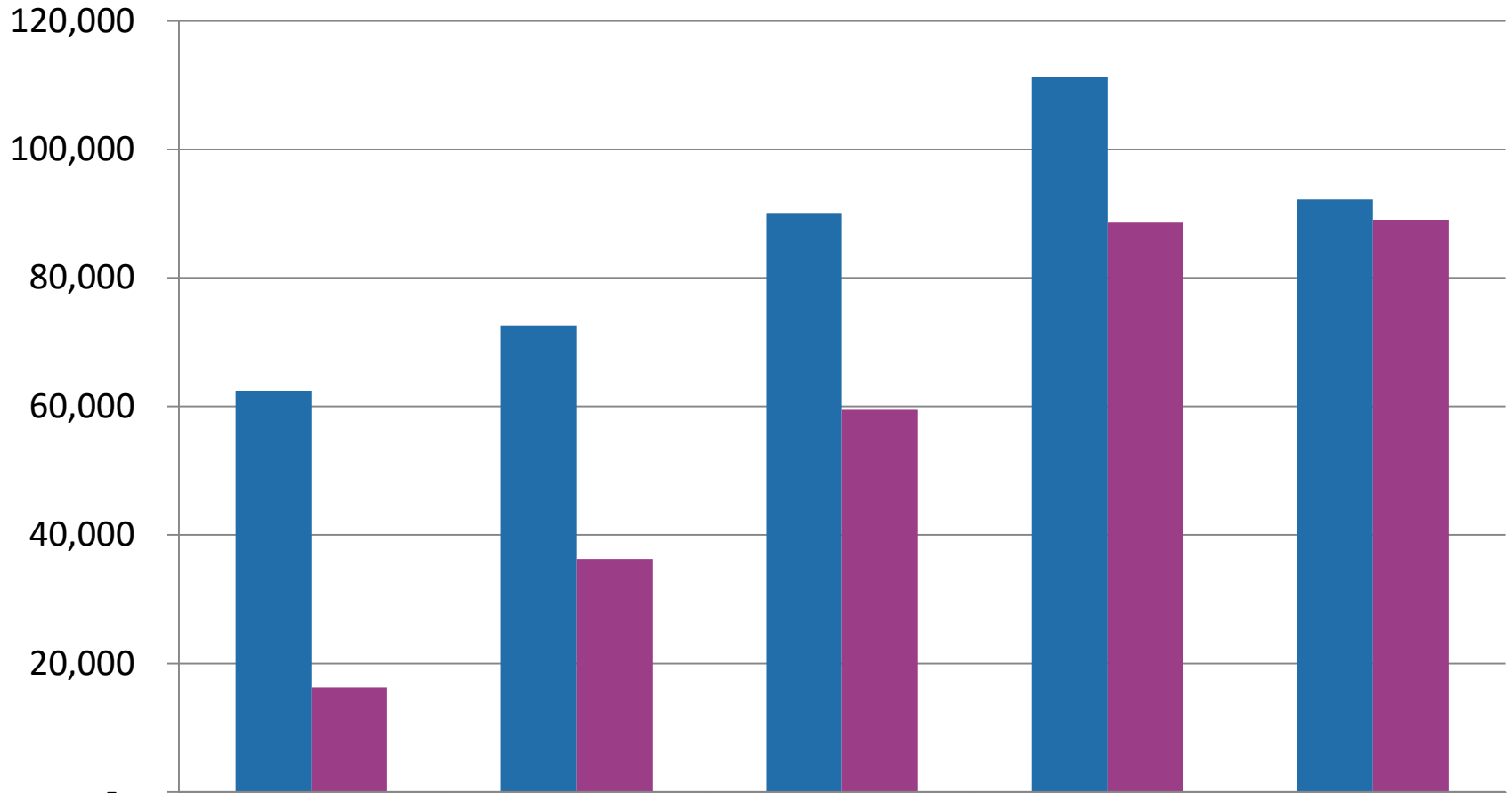
Crenshaw/LAX Northern Extension Alternatives



(This map is based on a 2010 Metro Preliminary Study Map that has been amended to include a potential Vermont alignment alternative and an overlay of related Los Angeles Council Districts)



Population & Jobs Served By Alignment



	Vermont	La Brea	Fairfax	La Cienega	San Vicente
Population	62,428	72,609	90,101	111,338	92,177
Jobs	16,244	36,248	59,491	88,730	89,056

Alignments from East (Left) to West (Right)